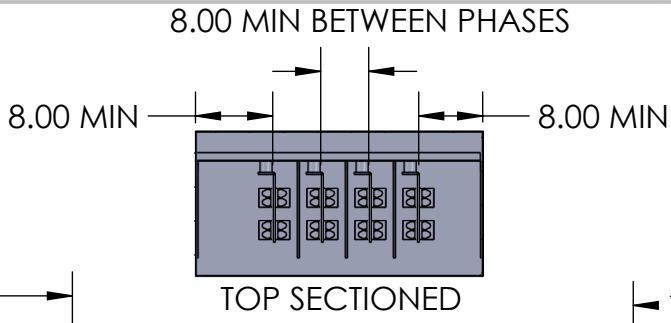


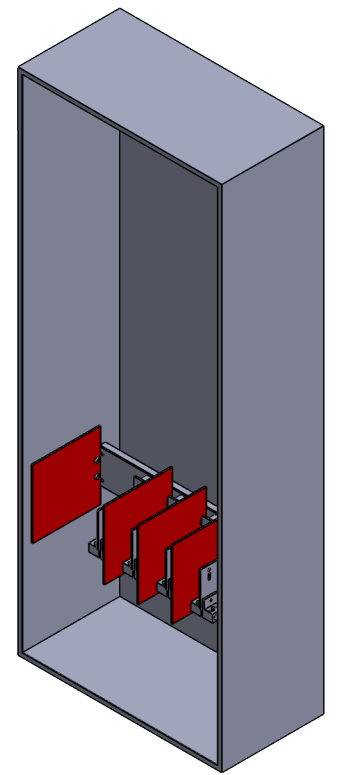
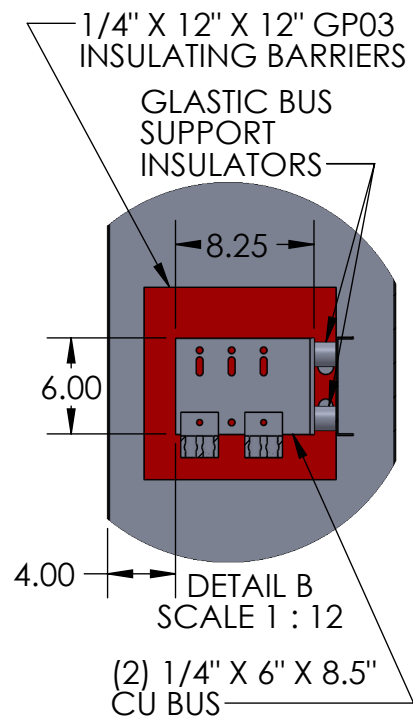
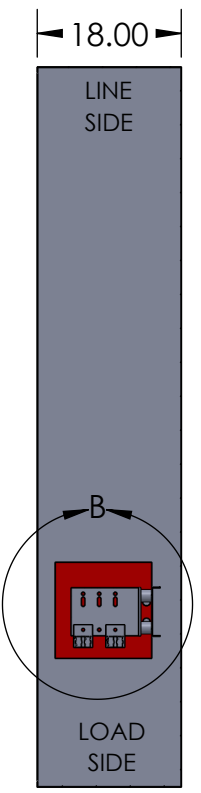
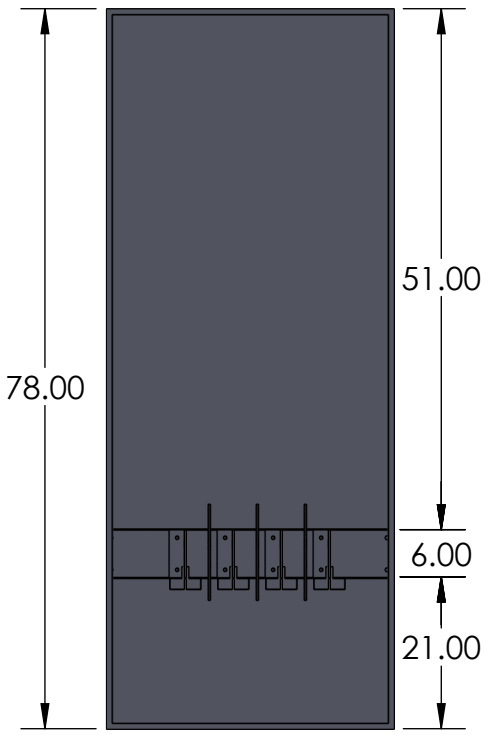
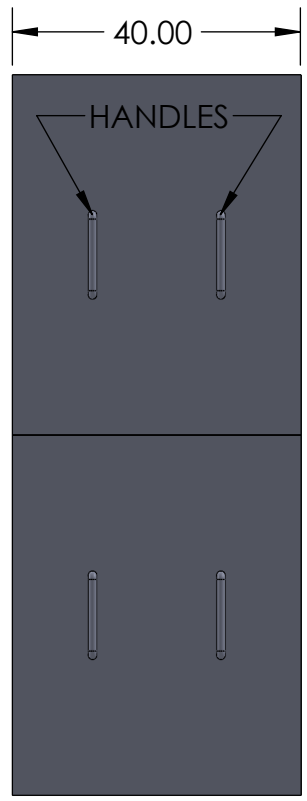
2

1



- NOTES:
1. BOX AND COVER CONSTRUCTION- GALV STEEL (12GA) FINISH: POWDER COAT GRAY ENAMEL
  2. BUS BARS- COPPER 98% CONDUCTIVITY
  3. BOX SHALL HAVE NAME PLATE WITH MANUFACTURER'S NAME
  4. FRONT COVERS SHALL BE SEALABLE WITH (2) HANDLES
  5. LINE SIDE: PROVISIONS FOR (6) 600 MCM - LUGS NOT INCLUDED
  6. LOAD SIDE: MOUNT UP TO (7) 600 MCM - MECHANICAL LUGS INCLUDED
  7. NEMA 1 CONSTRUCTION: STITCH WELDED ENCLOSURE
  8. \*120/208v BLACK LABEL WITH WHITE LETTERING LOCATION ON INSIDE AND OUTSIDE OF THE ENCLOSURE
  9. FOR 120/208V SERVICE ONLY  
FOR 277/480V SERVICE SEE 348210-72-N1 OR 348211-96-N1
  10. SHORT CIRCUIT CURRENT RATING 100,000 SYM RMS AMPS

B



B

A

|   |  |   |  |   |
|---|--|---|--|---|
|   |  |   | MATL: 12 GA GALV<br>FINISH: ANSI 61 GREY POWDER COAT<br>WEIGHT:  | DRAWING TITLE: EO-78-N1 CUT SHEET<br>PART #: NAV-EO-78-9073B  |
| DRAWN BY: N. BOSETTI<br>DATE: 12/30/2025<br>APPROVED BY:  | 155 MARCUS BLVD<br>HAUPPAUGE, NEW YORK 11788<br>PH: (718) 257-2111 FAX: (718) 257-2626 | UNLESS OTHERWISE SPECIFIED:<br>ALL DIMENSIONS ARE NOMINAL UNLESS EXPLICITLY SPECIFIED OTHERWISE | UNLESS OTHERWISE SPECIFIED:<br>1. REMOVE ALL BURRS AND BREAK ALL SHARP EDGES .015 X 45° OR .015R<br>2. DIMENSIONAL LIMITS APPLY AFTER PLATING<br>3. 125/ MACHINED SURFACES EXCEPT AS NOTED | DESCRIPTION:<br>NEMA 1 SERVICE ENTRANCE BOX<br>120/208V SERVICE UP TO 6 SETS LINE SIDE<br>SPECIFIED TO CON ED EO-9073-B |
| PROPRIETARY AND CONFIDENTIAL<br>THE INFORMATION CONTAINED IN THIS DRAWING IS THE SOLE PROPERTY OF Nav-Tech Inc. ANY REPRODUCTION IN PART OR AS A WHOLE WITHOUT THE WRITTEN PERMISSION OF Nav-Tech Inc. IS PROHIBITED. | DO NOT SCALE DRAWING   |   |  | SCALE: 1:24 SIZE A SHEET 1 OF 1 REV. 10   |

2

1

A